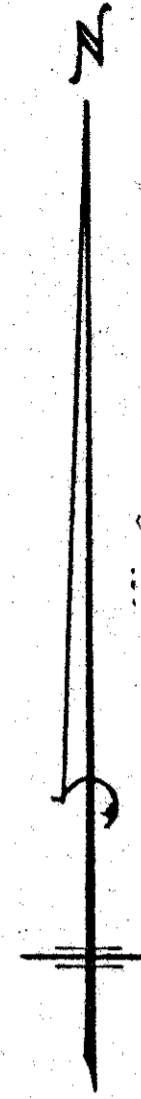
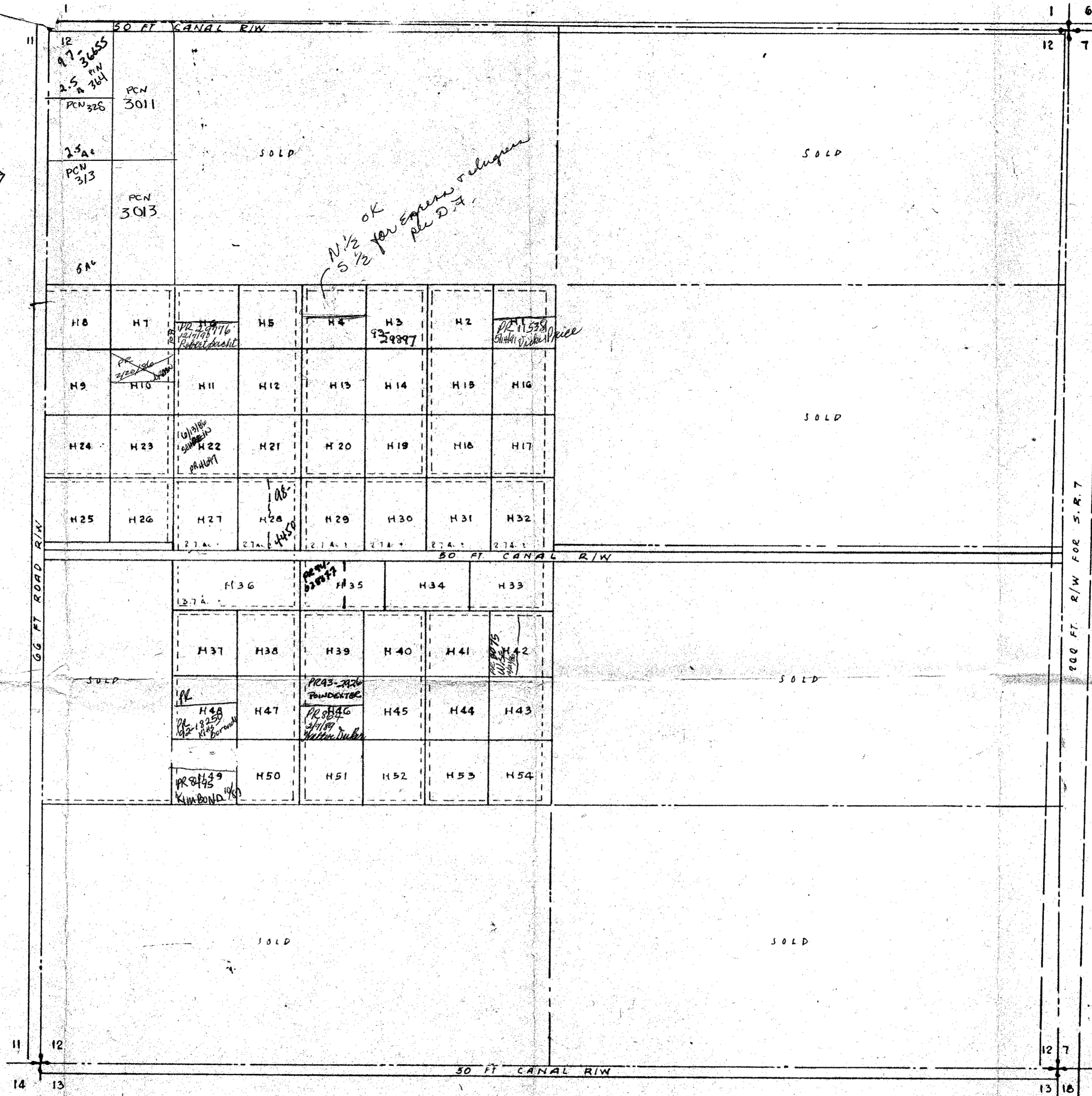


These dimensions  
not to scale  
From Aerial File



PARCELS EXCEEDING 2.5 ACRES ARE  
MARKED WITH ACREAGE THEREIN  
UNMARKED PARCELS ARE 2.5 ACRES  
ALL ACREAGE VALUES ARE PLUS OR MINUS

ur0343gr  
PB COUNTRY ESTATES 41-41-12 UNIT H

**PALM BEACH COUNTRY ESTATES SECTION "H"**

PALM BEACH COUNTY, FLORIDA  
FOR PALM BEACH DEVELOPMENT AND SALES CORP.

A DRAFTING DEVELOPMENT OF  
THE S 1/2 OF THE NW 1/4, THE NE 1/4 OF THE SW 1/4, AND THE E 1/2 OF THE NW 1/4 OF THE SW 1/4 OF  
SECTION 12 TOWNSHIP 41 SOUTH, RANGE 41 EAST  
AS CONTAINED IN THE REPLAT OF JUPITER FARMS AND GROVES, ACCORDING  
TO THE PLAT THEREOF RECORDED IN PLAT BOOK 24, PAGE 7 OF THE PUBLIC  
RECORDS OF PALM BEACH COUNTY, FLORIDA, SUBJECT TO THE EASEMENTS FOR CANALS  
AND ROADS SHOWN THEREIN, AND TO THE RIGHTS OF WAY AS SHOWN HEREON.

*John S. Luskoff*  
Eng. 6489

**H. SCHROFF & ASSOCIATES**  
ENGINEERS & SURVEYORS  
206 TENTH STREET  
LAKE PARK, FLORIDA 33403

DATE 12-12-66  
SCALE 1"=400'  
PLC 1121-4